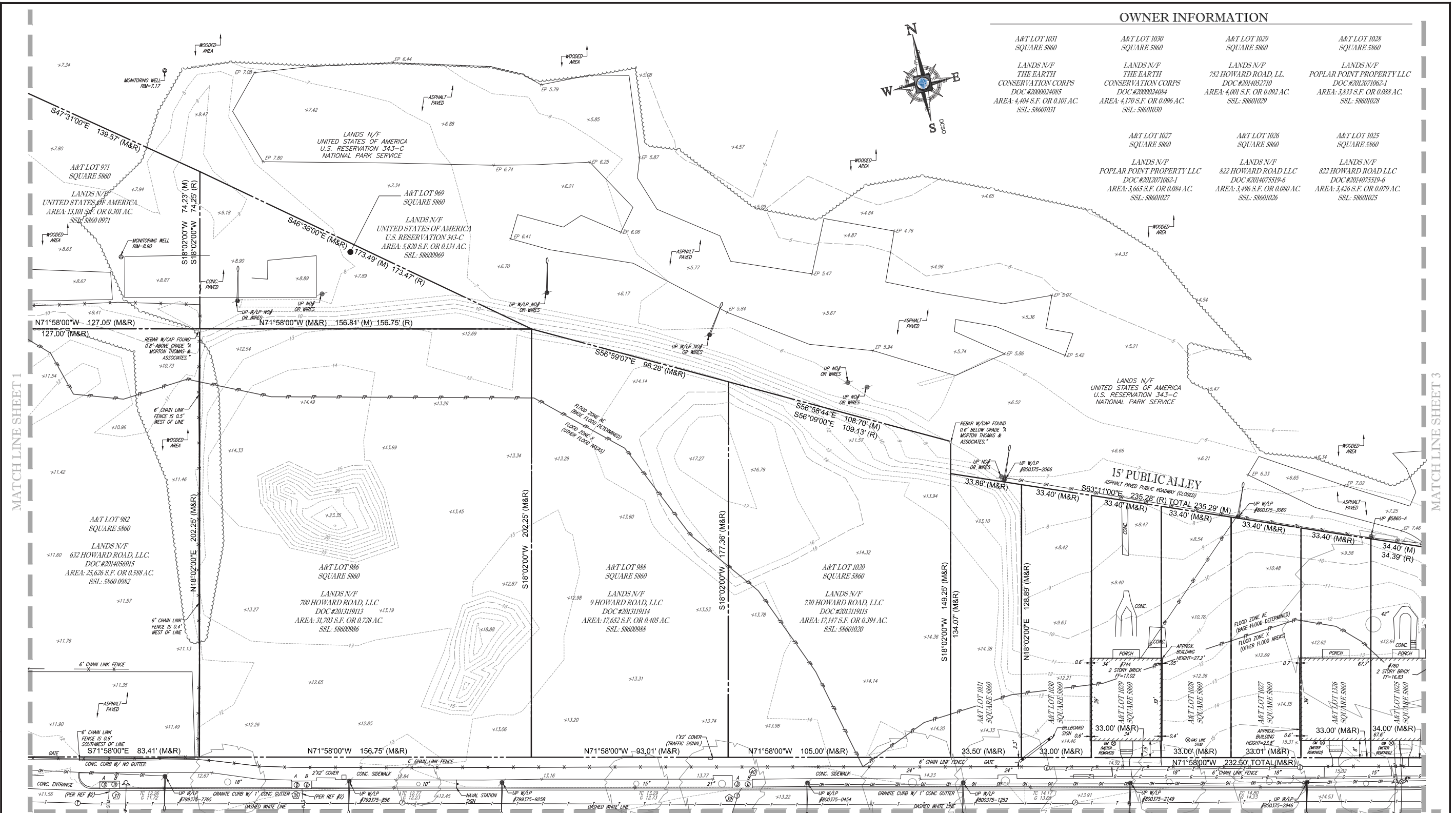


OWNER INFORMATION

A&T LOT 1031 SQUARE 5860 LANDS N/F THE EARTH CONSERVATION CORPS DOC #2000024085 AREA: 4.404 S.F. OR 0.101 AC. SSL: 58601031	A&T LOT 1030 SQUARE 5860 LANDS N/F THE EARTH CONSERVATION CORPS DOC #2000024084 AREA: 4.170 S.F. OR 0.096 AC. SSL: 58601030	A&T LOT 1029 SQUARE 5860 LANDS N/F 752 HOWARD ROAD, LL DOC #2014052710 AREA: 4.001 S.F. OR 0.092 AC. SSL: 58601029	A&T LOT 1028 SQUARE 5860 LANDS N/F POPLAR POINT PROPERTY LLC DOC #2012071062-1 AREA: 3.833 S.F. OR 0.088 AC. SSL: 58601028
A&T LOT 1027 SQUARE 5860 LANDS N/F POPLAR POINT PROPERTY LLC DOC #2012071062-1 AREA: 3.665 S.F. OR 0.084 AC. SSL: 58601027	A&T LOT 1026 SQUARE 5860 LANDS N/F 822 HOWARD ROAD LLC DOC #2014075519-6 AREA: 3.496 S.F. OR 0.080 AC. SSL: 58601026	A&T LOT 1025 SQUARE 5860 LANDS N/F 822 HOWARD ROAD LLC DOC #2014075519-6 AREA: 3.426 S.F. OR 0.079 AC. SSL: 58601025	

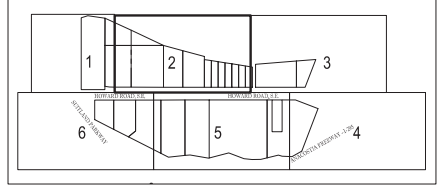


MATCH LINE SHEET 6

LEGEND

OH	OVERHEAD WIRES	123	EXISTING CONTOUR	⊙	TELEPHONE MANHOLE
- - -	APPROX. LOC. UNDERGROUND GAS LINE PER UTILITY MARKOUT	x 123.45	EXISTING SPOT ELEVATION	⊙	ELECTRIC MANHOLE
- - -	APPROX. LOC. UNDERGROUND WATER LINE PER UTILITY MARKOUT	x TC 123.45	EXIST. TOP OF CURB ELEVATION	⊙	WATER MANHOLE
- - -	APPROX. LOC. UNDERGROUND TEL. LINE PER UTILITY MARKOUT	x G 122.95	EXIST. GUTTER ELEVATION	⊙	STORM DRAIN MANHOLE
- - -	APPROX. LOC. UNDERGROUND ELEC. LINE PER UTILITY MARKOUT		UTILITY POLE	⊙	WATER METER
- - -	APPROX. LOC. UNDERGROUND WATER LINE PER REF. #1		TRAFFIC SIGNAL	⊙	GAS METER
- - -	APPROX. LOC. UNDERGROUND ELEC. LINE PER REF. #3		MONITORING WELL	⊙	SIGN
- - -	APPROX. LOC. UNDERGROUND SEWER LINE PER REF. #2 & 3		ELECTRIC METER	⊙	CLEAN OUT
- - -	APPROX. LOC. UNDERGROUND STORM LINE PER REF. #2 & 3		ELECTRIC BOX	⊙	HYDRANT
- - -	APPROX. LOC. FLOOD PLAIN		SANITARY MANHOLE	⊙	WATER VALVE
					GAS VALVE

MATCH LINE SHEET 5



KEY MAP
SCALE: 1" = 400'

BOUNDARY & TOPOGRAPHIC SURVEY
REDBRICK - POPLAR SQUARE

A&T LOTS 937, 969, 971, 982, 986, 988, 1020, 1025-1031, 10368 1037 SQUARE 5860
A&T LOTS 951 & 957 SQUARE 5861, LOTS 79, 82-86 SQUARE 5861
631-821 600-692 HOWARD ROAD, S.E.
WASHINGTON, DISTRICT OF COLUMBIA

FILE NO. SRW152035
DATE 06/03/2016
FIELD DATE 04/27/2016

22938 DAVIS DRIVE, SUITE 200
STERLING, VIRGINIA 20166
703.708.9500 • 703.709.9501 FAX
www.bohler-engineering.com

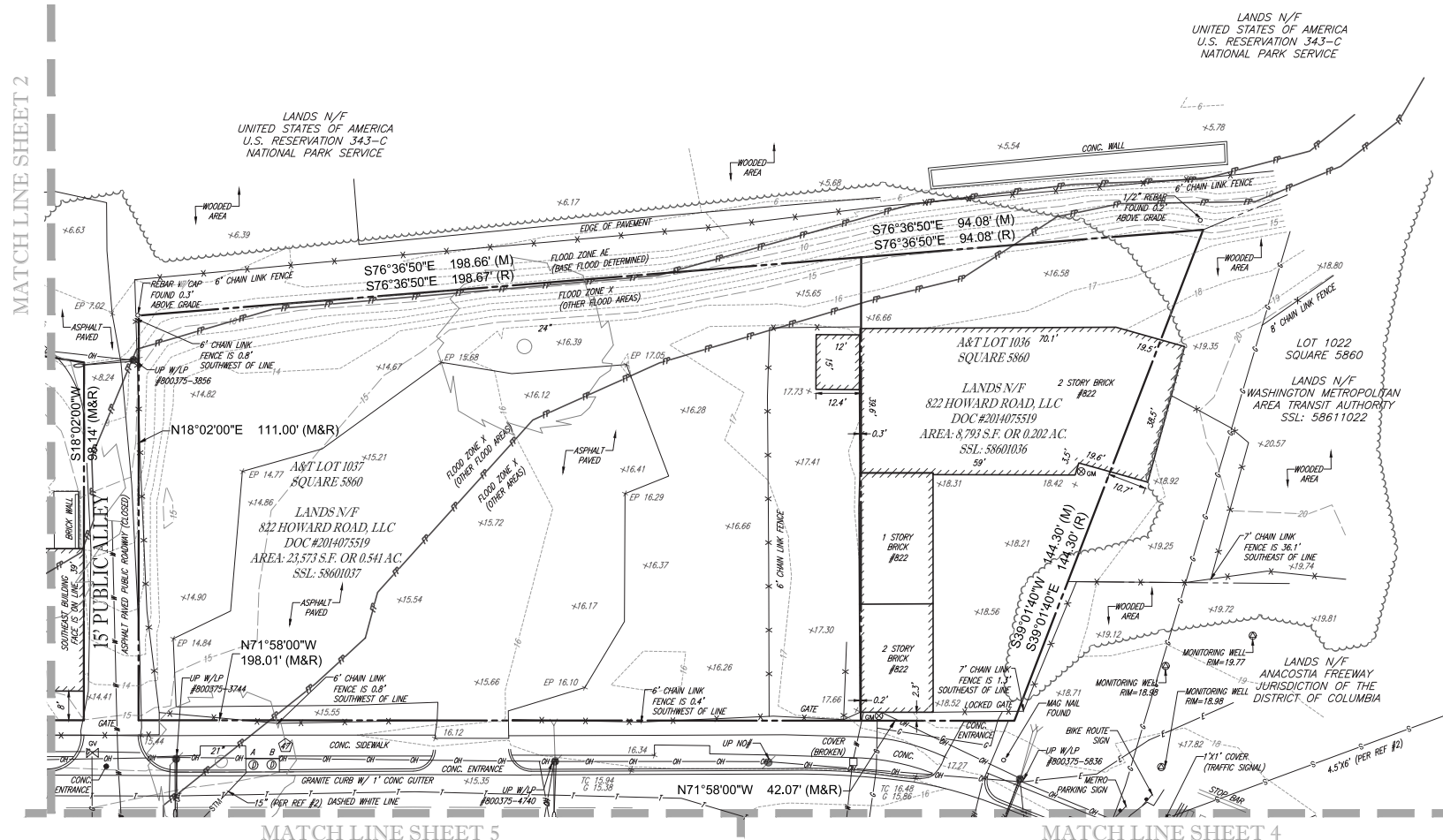
BOHLER ENGINEERING

ROBERT C. HARR, JR. DATE
DISTRICT OF COLUMBIA LICENSED LAND SURVEYOR NO. 906059

CREW CHIEF	DRAWN	REVIEWED	APPROVED	SCALE	DWG. NO.
J.W. - S.E.	C.R.	J.E.B.	J.S.F.	1" = 20'	2 OF 6



MATCH LINE SHEET 2

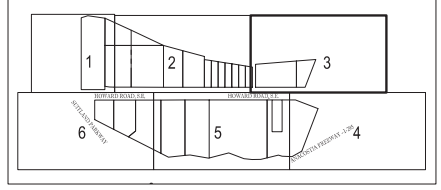


MATCH LINE SHEET 5

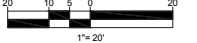
MATCH LINE SHEET 4

LEGEND

OVERHEAD WIRES	EXISTING CONTOUR	TELEPHONE MANHOLE	UTILITY POLE/LIGHT POLE
APPROX. LOC. UNDERGROUND GAS LINE PER UTILITY MARKOUT	EXISTING SPOT ELEVATION	ELECTRIC MANHOLE	GUY WIRE
APPROX. LOC. UNDERGROUND WATER LINE PER UTILITY MARKOUT	EXIST. TOP OF CURB ELEVATION	WATER MANHOLE	TRAFFIC SIGNAL POLE
APPROX. LOC. UNDERGROUND TEL. LINE PER UTILITY MARKOUT	EXIST. GUTTER ELEVATION	STORM DRAIN MANHOLE	TREE LINE
APPROX. LOC. UNDERGROUND ELEC. LINE PER UTILITY MARKOUT	UTILITY POLE	WATER METER	TREE (SIZE AS NOTED)
APPROX. LOC. UNDERGROUND WATER LINE PER REF. #1	TRAFFIC SIGNAL	GAS METER	
APPROX. LOC. UNDERGROUND ELEC. LINE PER REF. #1	MONITORING WELL	SIGN	
APPROX. LOC. UNDERGROUND SEWER LINE PER REF. #1 & 2 & 3	ELECTRIC METER	CLEAN OUT	
APPROX. LOC. UNDERGROUND STORM LINE PER REF. #1 & 2 & 3	ELECTRIC BOX	HYDRANT	
APPROX. LOC. FLOOD PLAIN	SANITARY MANHOLE	WATER VALVE	
		GAS VALVE	
		BOLLARD	
		U-BOLLARD	
		METAL GUARDRAIL	
		BENCHMARK	
		FENCE	
		LANDSCAPED AREA	
		BORING LOCATION	
		AREA LIGHT	
		PAINTED ARROWS	
		STORM & SANITARY STRUCTURE ID NUMBER	



KEY MAP
SCALE: 1" = 400'

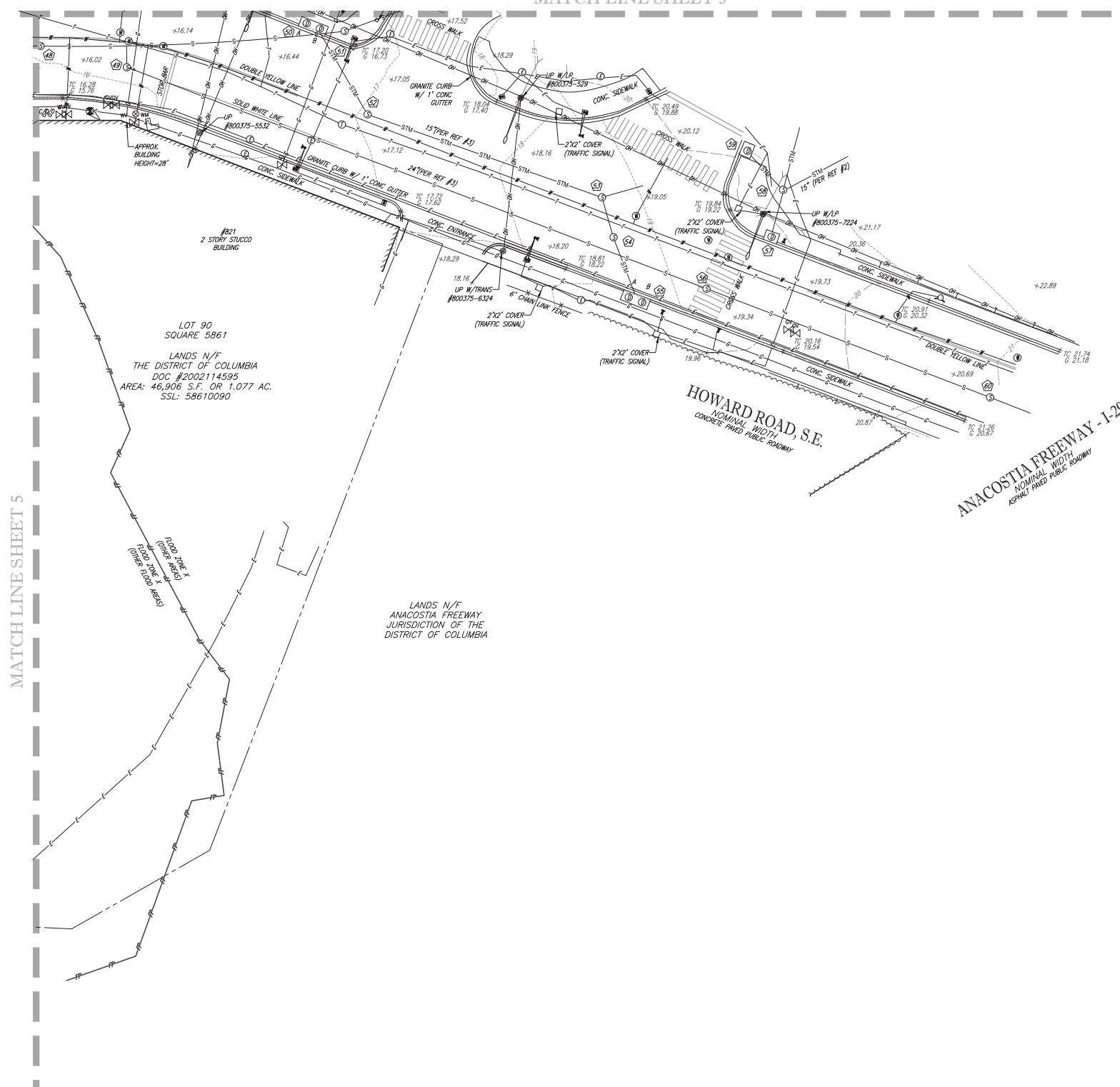


BOUNDARY & TOPOGRAPHIC SURVEY
REDBRICK - POPLAR POINT

A&T LOTS 937, 969, 971, 982, 986, 988, 1020, 1025-1031, 10368, 1037 SQUARE 5860
A&T LOTS 951 & 957 SQUARE 5861, LOTS 79, 82-86 SQUARE 5861
631-821-600-692 HOWARD ROAD, S.E.
WASHINGTON, DISTRICT OF COLUMBIA

FILE NO. SRW152035				2299 DAVIS DRIVE, SUITE 209 STERLING, VIRGINIA 20164 703.706.9500 • 703.709.9501 FAX www.bohlerengineering.com	
DATE 06/03/2016				PROJECT: NEW YORK METRO AREA LOCATION: WASHINGTON METRO AREA DRAWN BY: J.W. - S.E. CHECKED BY: J.W. - S.E. DATE: 04/27/2016	
FIELD DATE 04/27/2016	CREW CHIEF J.W. - S.E.	DRAWN C.R.	REVIEWED J.E.B.	APPROVED J.S.F.	SCALE 1" = 20'
				DWG. NO. 3 of 6	

ROBERT C. HARR, JR.
DISTRICT OF COLUMBIA LICENSED LAND SURVEYOR NO. 906059



MATCH LINE SHEET 5

LANDS N/F
ANACOSTIA FREEWAY
JURISDICTION OF THE
DISTRICT OF COLUMBIA

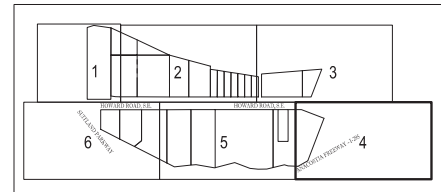
LOT 90
SQUARE 5861
LANDS N/F
THE DISTRICT OF COLUMBIA
DOC #2002114595
AREA: 46,906 S.F. OR 1.077 AC.
SSL: 58610090

HOWARD ROAD, S.E.
NOMINAL WIDTH
CONCRETE PAVED PUBLIC ROADWAY

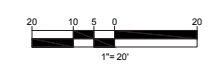
ANACOSTIA FREEWAY - I-295
NOMINAL WIDTH
ASPHALT PAVED PUBLIC ROADWAY

LEGEND

OH	OVERHEAD WIRES	123	EXISTING CONTOUR		TELEPHONE MANHOLE		UTILITY POLE/LIGHT POLE
	APPROX. LOC. UNDERGROUND GAS LINE PER UTILITY MARKOUT		EXISTING SPOT ELEVATION		ELECTRIC MANHOLE		GUY WIRE
	APPROX. LOC. UNDERGROUND WATER LINE PER UTILITY MARKOUT		EXIST. TOP OF CURB ELEVATION		WATER MANHOLE		TRAFFIC SIGNAL POLE
	APPROX. LOC. UNDERGROUND TEL. LINE PER UTILITY MARKOUT		EXIST. GUTTER ELEVATION		STORM DRAIN MANHOLE		TREE LINE
	APPROX. LOC. UNDERGROUND ELEC. LINE PER UTILITY MARKOUT		UTILITY POLE		WATER METER		TREE (SIZE AS NOTED)
	APPROX. LOC. UNDERGROUND WATER LINE PER REF. #1		TRAFFIC SIGNAL		GAS METER		FIRE DEPARTMENT CONNECTION
	APPROX. LOC. UNDERGROUND ELEC. LINE PER REF. #3		MONITORING WELL		SIGN		
	APPROX. LOC. UNDERGROUND SEWER LINE PER REF. #2 & 3		ELECTRIC METER		CLEAN OUT		
	APPROX. LOC. UNDERGROUND STORM LINE PER REF. #2 & 3		ELECTRIC BOX		HYDRANT		
	APPROX. LOC. FLOOD PLAN		SANITARY MANHOLE		WATER VALVE		
			TELEPHONE MANHOLE		GAS VALVE		



KEY MAP
SCALE: 1" = 400'



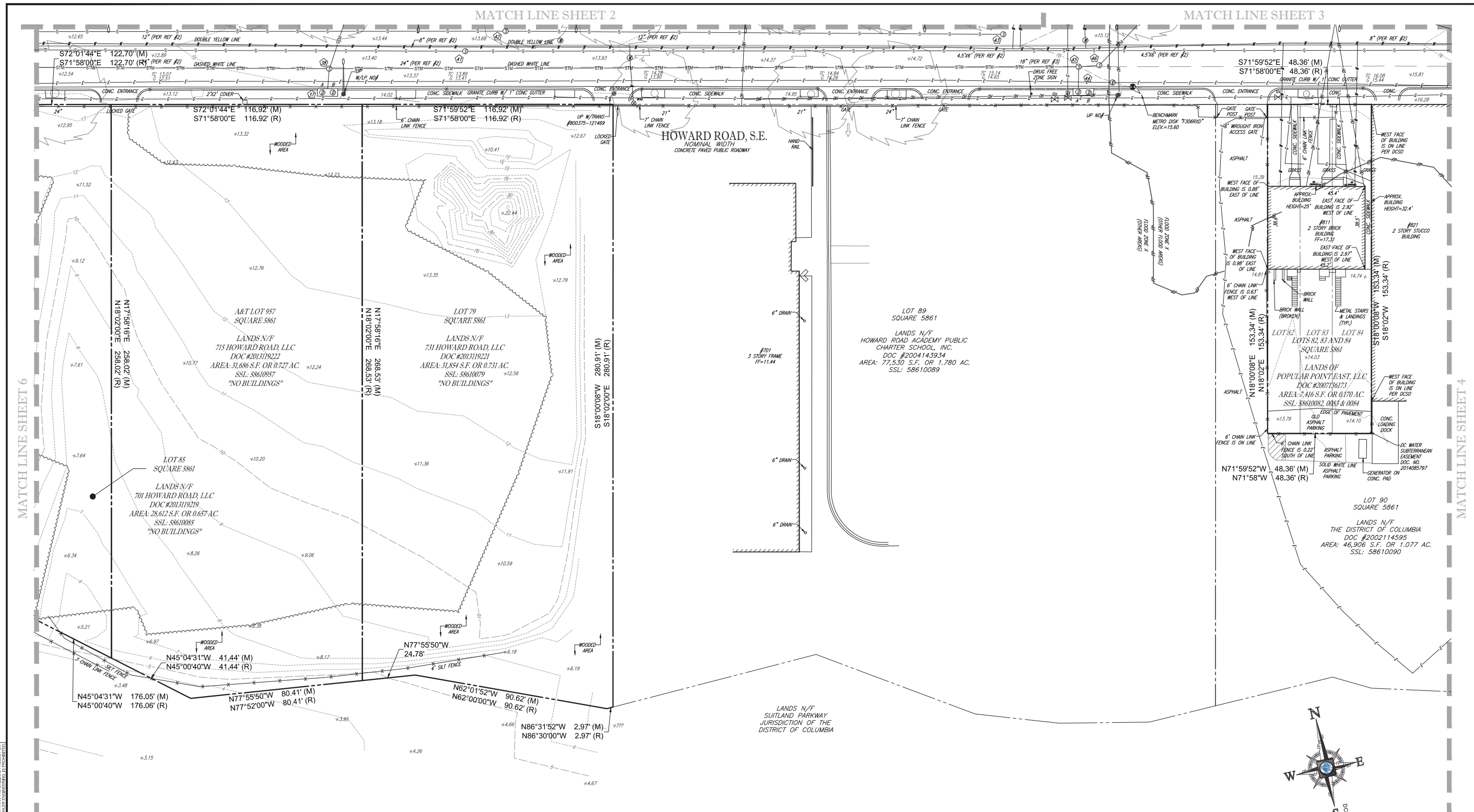
BOUNDARY & TOPOGRAPHIC SURVEY
REDBRICK - POPLAR POINT

A&T LOTS 937, 969, 971, 982, 986, 988, 1020, 1025-1031, 1036& 1037 SQUARE 5860
A&T LOTS 951 & 957 SQUARE 5861, LOTS 79, 82-88 SQUARE 5861
631-821 600-692 HOWARD ROAD, S.E.
WASHINGTON, DISTRICT OF COLUMBIA

FILE NO. SRW152035	DATE 06/03/2016	FIELD DATE 04/27/2016	CREW CHIEF J.W. - S.E.	DRAWN C.R.	REVIEWED J.E.B.	APPROVED J.S.F.	SCALE 1" = 20'	DWG. NO. 4 OF 6
-----------------------	--------------------	--------------------------	---------------------------	---------------	--------------------	--------------------	-------------------	--------------------

BOHLER ENGINEERING, INC. 22830 DAVIS DRIVE, SUITE 250
STERLING, VIRGINIA 20154
703.709-9500 • 703.709-9501 FAX
www.bohlerengineering.com

ROBERT C. HARR, JR. DATE
DISTRICT OF COLUMBIA LICENSED LAND SURVEYOR NO. 906059

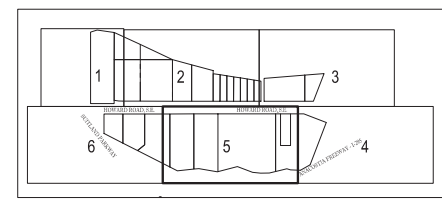


MATCH LINE SHEET 6

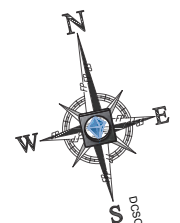
MATCH LINE SHEET 4

LEGEND

OH	OVERHEAD WIRES	123	EXISTING CONTOUR	⊙	TELEPHONE MANHOLE	●	BOLLARD	⬆	UTILITY POLE/LIGHT POLE
—	APPROX. LOC. UNDERGROUND GAS LINE PER UTILITY MARKOUT	x 123.45	EXISTING SPOT ELEVATION	⊙	ELECTRIC MANHOLE	⊙	U-BOLLARD	⬆	GLY WIRE
—	APPROX. LOC. UNDERGROUND WATER LINE PER UTILITY MARKOUT	x TC 123.45	EXIST. TOP OF CURB ELEVATION	⊙	WATER MANHOLE	⊙	METAL GUARDRAIL	⬆	TRAFFIC SIGNAL POLE
—	APPROX. LOC. UNDERGROUND TEL. LINE PER UTILITY MARKOUT	x G 123.45	EXIST. GUTTER ELEVATION	⊙	STORM DRAIN MANHOLE	⊙	⊙	⬆	TREE LINE
—	APPROX. LOC. UNDERGROUND ELEC. LINE PER UTILITY MARKOUT		UTILITY POLE	⊙	WATER METER	⊙	⊙	⬆	TREE (SIZE AS NOTED)
—	APPROX. LOC. UNDERGROUND WATER LINE PER REF. #1		TRAFFIC SIGNAL	⊙	GAS METER	⊙	⊙		
—	APPROX. LOC. UNDERGROUND ELEC. LINE PER REF. #3		MONITORING WELL	⊙	SIGN	⊙	⊙		
—	APPROX. LOC. UNDERGROUND SEWER LINE PER REF. #2 & 3		ELECTRIC METER	⊙	CLEAN OUT	⊙	⊙		
—	APPROX. LOC. UNDERGROUND STORM LINE PER REF. #2 & 3		ELECTRIC BOX	⊙	HYDRANT	⊙	⊙		
—	APPROX. LOC. FLOOD PLAN		SANITARY MANHOLE	⊙	WATER VALVE	⊙	⊙		
					GAS VALVE	⊙	⊙		



KEY MAP SCALE: 1" = 400'



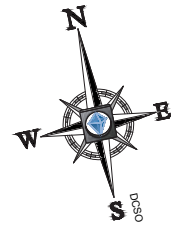
BOUNDARY & TOPOGRAPHIC SURVEY
REDBRICK - POPLAR POINT
 A&T LOTS 937, 969, 971, 982, 986, 988, 1020, 1025-1031, 1036& 1037 SQUARE 5860
 A&T LOTS 951 & 957 SQUARE 5861, LOTS 79, 82-86 SQUARE 5861
 631-821 600-892 HOWARD ROAD, S.E.
 WASHINGTON, DISTRICT OF COLUMBIA

FILE NO. SRW152035
 DATE 06/03/2016
 FIELD DATE 04/27/2016

BOHLER ENGINEERING
 2288 DAVIS DRIVE, SUITE 250
 STERLING, VIRGINIA 20164
 703.708.0000 - FAX 703.708.0144
 www.bohlerengineering.com

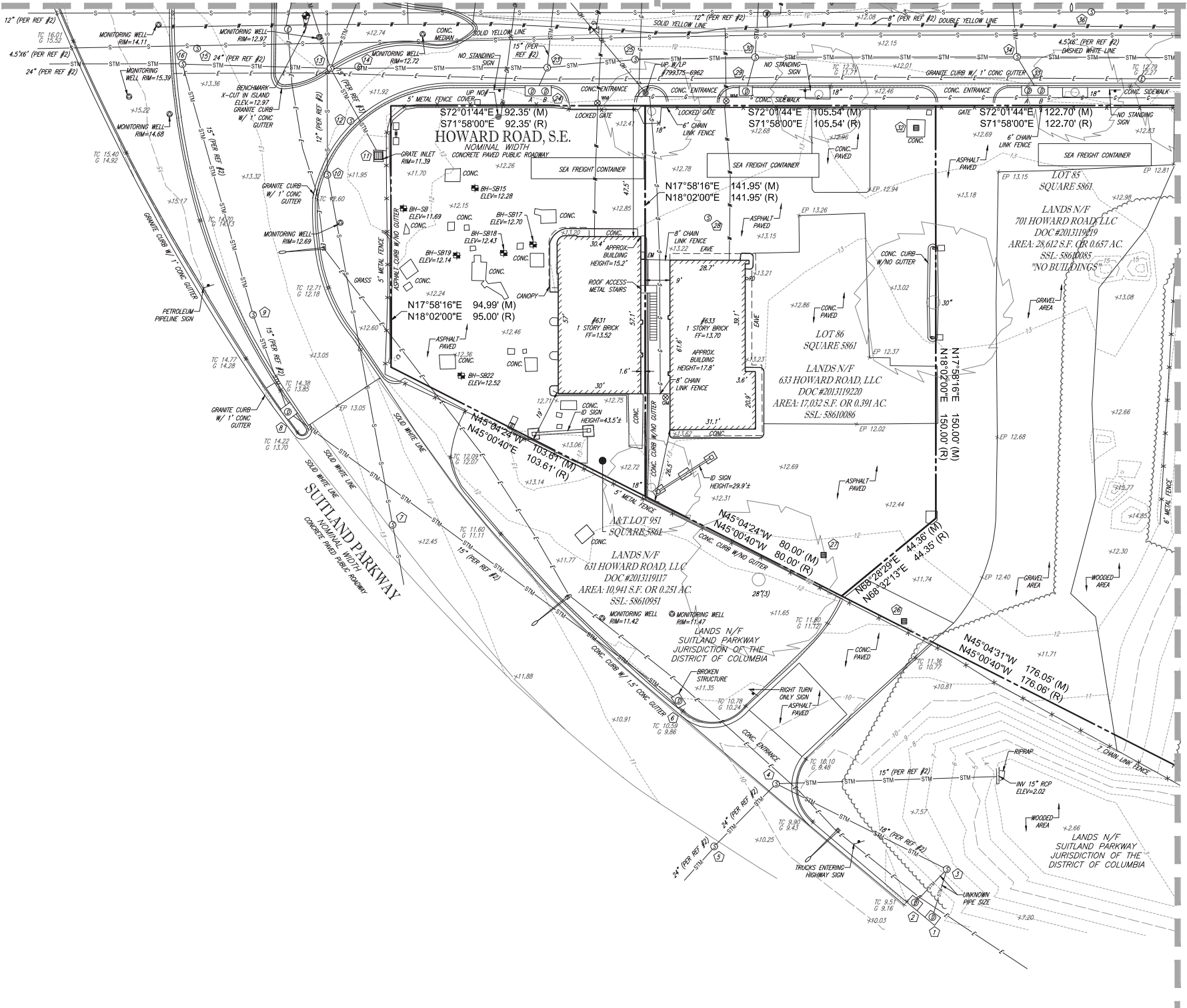
CREW CHIEF J.W. - S.E.
 DRAWN C.R.
 REVIEWED J.E.B.
 APPROVED J.S.F.
 SCALE 1" = 20'
 DWG. NO. 5 OF 6

ROBERT C. HARR, JR.
 DISTRICT OF COLUMBIA LICENSED LAND SURVEYOR NO. 906059



MATCH LINE SHEET 1

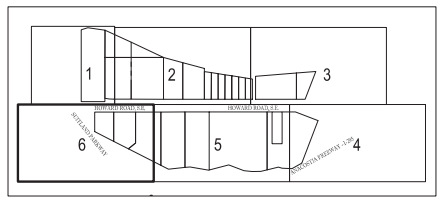
MATCH LINE SHEET 2



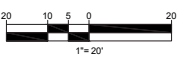
MATCH LINE SHEET 5

LEGEND

	OVERHEAD WIRES		EXISTING CONTOUR		TELEPHONE MANHOLE
	APPROX. LOC. UNDERGROUND GAS LINE PER UTILITY MARKOUT		EXISTING SPOT ELEVATION		ELECTRIC MANHOLE
	APPROX. LOC. UNDERGROUND WATER LINE PER UTILITY MARKOUT		EXIST. TOP OF CURB ELEVATION		WATER MANHOLE
	APPROX. LOC. UNDERGROUND TEL. LINE PER UTILITY MARKOUT		EXIST. GUTTER ELEVATION		STORM DRAIN MANHOLE
	APPROX. LOC. UNDERGROUND ELEC. LINE PER UTILITY MARKOUT		UTILITY POLE		WATER METER
	APPROX. LOC. UNDERGROUND WATER LINE PER REF. #1		TRAFFIC SIGNAL		GAS METER
	APPROX. LOC. UNDERGROUND ELEC. LINE PER REF. #3		MONITORING WELL		SIGN
	APPROX. LOC. UNDERGROUND SEWER LINE PER REF. #2 & 3		ELECTRIC METER		CLEAN OUT
	APPROX. LOC. UNDERGROUND STORM LINE PER REF. #2 & 3		ELECTRIC BOX		HYDRANT
	APPROX. LOC. FLOOD PLAIN		SANITARY MANHOLE		WATER VALVE
					GAS VALVE



KEY MAP
SCALE: 1" = 400'



BOUNDARY & TOPOGRAPHIC SURVEY
REDBRICK - POPLAR POINT

A&T LOTS 937, 969, 971, 982, 986, 988, 1020, 1025-1031, 1036& 1037 SQUARE 5860
A&T LOTS 951 & 957 SQUARE 5861, LOTS 79, 82-86 SQUARE 5861
631-821 600-692 HOWARD ROAD, S.E.
WASHINGTON, DISTRICT OF COLUMBIA

FILE NO. SRW152035	22939 DAVIS DRIVE, SUITE 209 STERLING, VIRGINIA 20164 703.706.9500 • 703.706.9501 FAX
DATE 06/03/2016	BOHLER ENGINEERING www.bohlerengineering.com
FIELD DATE 04/27/2016	CREW CHIEF J.W. - S.E.
DATE 06/03/2016	DRAWN C.R.
DATE 06/03/2016	REVIEWED J.E.B.
DATE 06/03/2016	APPROVED J.S.F.
DATE 06/03/2016	SCALE 1" = 20'
DATE 06/03/2016	DWG. NO. 6 OF 6

